

RØDE



NTH-100

PROFESSIONAL OVER-EAR HEADPHONES



Hello,

We are extremely proud to introduce you to the RØDE NTH-100s – our very first pair of headphones.

The NTH-100s are the culmination of decades of passion and immersion in audio technology. For over 30 years, we have been building a legacy unlike any other audio company – one built on a foundation of obsession with sonic perfection. Nobody understands sound like we do, and these headphones are proof of that.

With the NTH-100s, our mission was to create a very high-quality product that offers exceptional performance and innovative features at a very accessible price point – a formula that has been the driving force behind RØDE's success since the very beginning.

In a lot of ways, designing these headphones brought us back to our roots in the early 1990s when we developed the NT1, an affordable studio condenser microphone that contended with the world's most renowned classics. With the NTH-100s, we faced a similar challenge: to shake up the headphone market with a product that is new and exciting, sounds exceptional and feels unbelievable. Once again, we have succeeded.

We relish a challenge at RØDE; innovation is what we do. From concept to manufacture, we accepted no compromise with these headphones. They were designed completely from the ground up, with every feature and component painstakingly crafted to deliver outstanding performance, unmatched comfort and style, and the functionality that everybody needs and wants from a pair of headphones.

Through literally hundreds of iterations, every aspect of their design and execution was examined, considered and refined with one goal in mind: to deliver superlative performance that blows our competitors out of the water.

On behalf of our very talented team, I can say with absolute confidence that we have achieved this goal.

Please read on to find out more about the NTH-100s – but before you do, we suggest putting them on and pressing play on your favourite piece of music, so you can immerse yourself in everything they have to offer.

We hope you love them as much as we do.



Damien Wilson
RØDE CEO

EXPERIENCE SOUND LIKE NEVER BEFORE

The RØDE NTH-100s are professional over-ear headphones that are perfect for all forms of content creation, including mixing, audio and video production, location recording, podcasting and streaming. Combining exceptional sonic performance, superior comfort and iconic looks, the NTH-100s offer an incredible aural experience that inspires creativity.

Key features:

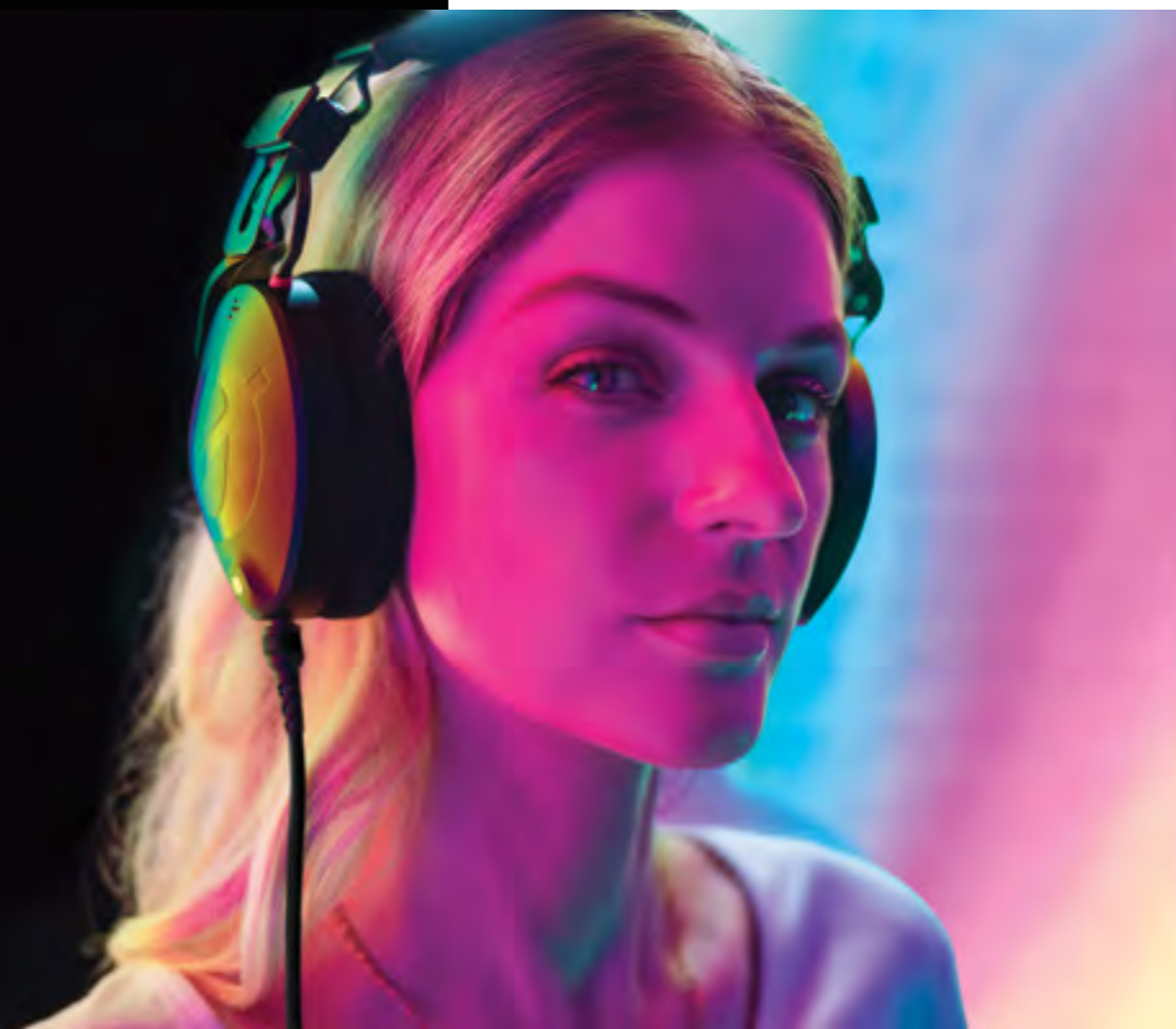
- Custom-matched drivers that deliver an incredibly accurate frequency response ideal for monitoring and mixing
- Precision-engineered acoustic construction optimised for exceptional detail, clarity and a very natural sound
- Alcantara® earcup and headband cushions for superior comfort
- Revolutionary CoolTech™ earcups for reducing wearing fatigue
- Fully adjustable headband with FitLok™ locking system
- Designed and made in RØDE's state-of-the-art facilities in Sydney, Australia

“

The NTH-100s are the culmination of decades of passion and immersion in audio technology.

Damien Wilson
RØDE CEO

”



AUDIO AS IT'S MEANT TO BE HEARD

The NTH-100s are designed to preserve the purity of what you are creating. Featuring custom-matched drivers that deliver an extremely accurate frequency response and a state-of-the-art acoustic design optimised for exceptional detail and clarity, they offer an incredibly articulate listening experience.

They are very natural-sounding headphones with a sound signature akin to open-backs, but with all the advantages of closed-backs, including passive isolation from external sounds and no leakage into your room or microphones.

The unique ergonomic earcups are contoured to the shape of the ear for superior acoustic performance, with memory foam cushions ensuring excellent isolation from external noise.

They are low-impedance and high-sensitivity headphones, making them very easy to drive with any interface, mixer, or headphone amplifier.

The NTH-100s are precision-crafted to retain every nuance of your audio, be it a single sound source, a mix in-progress, or the final product.

In other words: audio as it's meant to be heard.

If you would like to learn more about their design, specifications or development process, please reach out to your contact at RØDE.



THE MOST COMFORTABLE HEADPHONES EVER. PERIOD.

We firmly believe the NTH-100s are the most comfortable headphones you will ever wear. They are optimised for long-format content creation, with every component painstakingly crafted with comfort in mind. This, of course, starts with the earcups and headband.

The NTH-100s feature luxurious Alcantara® fabric on the earpad and headband cushions. This is a premium material often used in sports cars and high-end fashion. It is supremely comfortable to the touch – highly breathable and very soft – and extremely durable (more on this later).

The earpads also feature our revolutionary CoolTech™ gel integrated into the cushions, which absorbs and dissipates heat, actively cooling your ears to reduce wearing fatigue. This feature is invaluable for creators who often find themselves in long, arduous sessions – from mixing engineers to podcasters.

The balanced frequency response of the NTH-100s is also perfect for long sessions as it reduces listening fatigue that can be caused by pronounced frequencies common in other headphones.

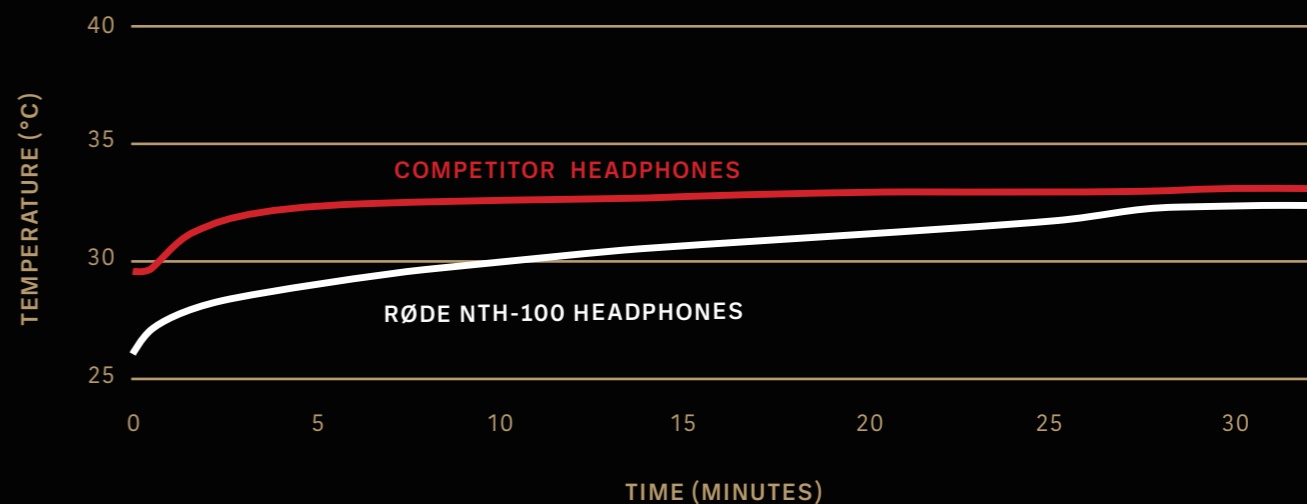
FitLok™ headband locking system

The ergonomic earcups are incredibly comfortable and also feature a bi-directional adjustment system and memory foam cushions, which not only ensure excellent sound isolation but also give the headphones a custom-fit feel for any head size or shape (even for people who wear glasses). They also feature cable attachments on both the left and right earcups, with cables available in both 2.4m and 1.2m variants for maximum convenience.

Finally, the NTH-100s feature a fully adjustable headband with our innovative FitLok™ locking system that secures the earcups in place, so they feel exactly how you remember them every time you put them on.



TEMPERATURE COMPARISON BETWEEN RØDE & LEADING COMPETITOR HEADPHONES



STYLE, IN A CLASS OF ITS OWN

The NTH-100s not only sound and feel incredible, they also ooze style. The perfect marriage of classic aesthetics and cutting-edge industrial design. An instant icon.

The Alcantara® cushions give the headphones a premium look and feel, complimented by the clean lines and high-grade finishes of the earcups and headband. The ergonomic earcup design is not only acoustically optimal, but also aesthetically unique, topped off by the iconic RØDE 'Ø' and gold dot.

The NTH-100s also feature a modular design: the earpads, headband and cable are all user-customisable, with four colours available (after launch and sold separately). This not only significantly increases the lifespan of the headphones, but also allows them to be customised to suit any style.



HEADPHONES WITH ALL THE TRIMMINGS

Easy left/
right earcup
identification

Locking headphone
connectors for
complete security

Dual-sided cable attachments
for maximum flexibility



INCLUDED ACCESSORIES



Storage pouch



High-quality 2.4m
detachable cable



3.5mm to 1/4-inch
cable adaptor



Coloured ID rings for
easy cable identification

BUILT FOR CREATIVE ENDURANCE

Like all RØDE products, the NTH-100s are precision-engineered using the highest quality components and built to withstand the rigours of creating day in, day out.

Every element of their construction has been meticulously designed for longevity: the headband is high-grade stainless spring steel with a highly durable coating; the Alcantara® earpad and headband cushions are extremely resistant to wear and tear; the earpads and headband are both user-replaceable and can be taken off in seconds; and the flexible, easy-roll cable is also highly durable and user-replaceable.

The bi-directional earcup adjustment design is incredibly sturdy and the FitLok™ headband locking system minimises movement when the headphones aren't in use. The NTH-100s also come with a storage pouch for keeping them safe on the road or in the field.

Every pair of NTH-100s is made right here in RØDE's state-of-the-art manufacturing facilities in Sydney, Australia, and is backed by our 2-year warranty and legendary customer service.



UNMATCHED DURABILITY.

When creating the NTH-100s, “good enough” was never good enough. From the beginning, we set out to make a pair of headphones that, in addition to looking, sounding and feeling incredible, was also supremely tough. Every decision regarding design elements, materials and construction details was made to ensure the highest level of reliability and durability, with a rigorous testing process validating each choice we made.



The stainless spring steel headband was tested under extreme pressure over 20,000 times (equating to roughly 25 years of daily use) to ensure it will never wear out.

Every component was made to last, right down to the wire that links the earcups. These are rated to withstand over 25kg of force, so if it gets snagged on something in your bag, it will not stretch or break.

The cable and earcup sockets are rated to 12kg, and the bayonet connector is made from a slightly softer material than the socket, so if the cable gets pulled *in extremis*, it's the (user-replaceable) connector that deforms, not the headphones themselves.

We used robotic technology to pull, bend, tug, rotate and stretch the final construction of the headphones thousands of times to ensure they will withstand decades of use and still look and sound flawless.

The NTH-100s were also put through several environmental testing procedures for durability assurance in a wide variety of potential scenarios – everything from climate and water tests to drop and abrasion tests.

They passed with flying colours.



NTH-100

SPECIFICATIONS

ACOUSTIC & ELECTRICAL

Transducer Size: 40mm

Operating Principal: Dynamic

Frequency Response: 5Hz – 35kHz

Impedance: 32Ω

Sensitivity: 110dB

Max SPL: 126dB SPL

Ear Coupling: Circumaural

Ambient Noise Attenuation: 20dBA

Connection Type: Dual TRRS Cable Attachments

MECHANICAL

Weight: 350g

Cable Length: 2.4m

Included Accessories:

- 1 x 2.4m Headphone Cable (Black)
- 1 x 3.5mm to ¼-inch Adaptor
- 1 x Storage Pouch
- 1 x COLORS ID Set

“

Nobody understands sound like we do,
and these headphones are proof of that.

Damien Wilson
RØDE CEO

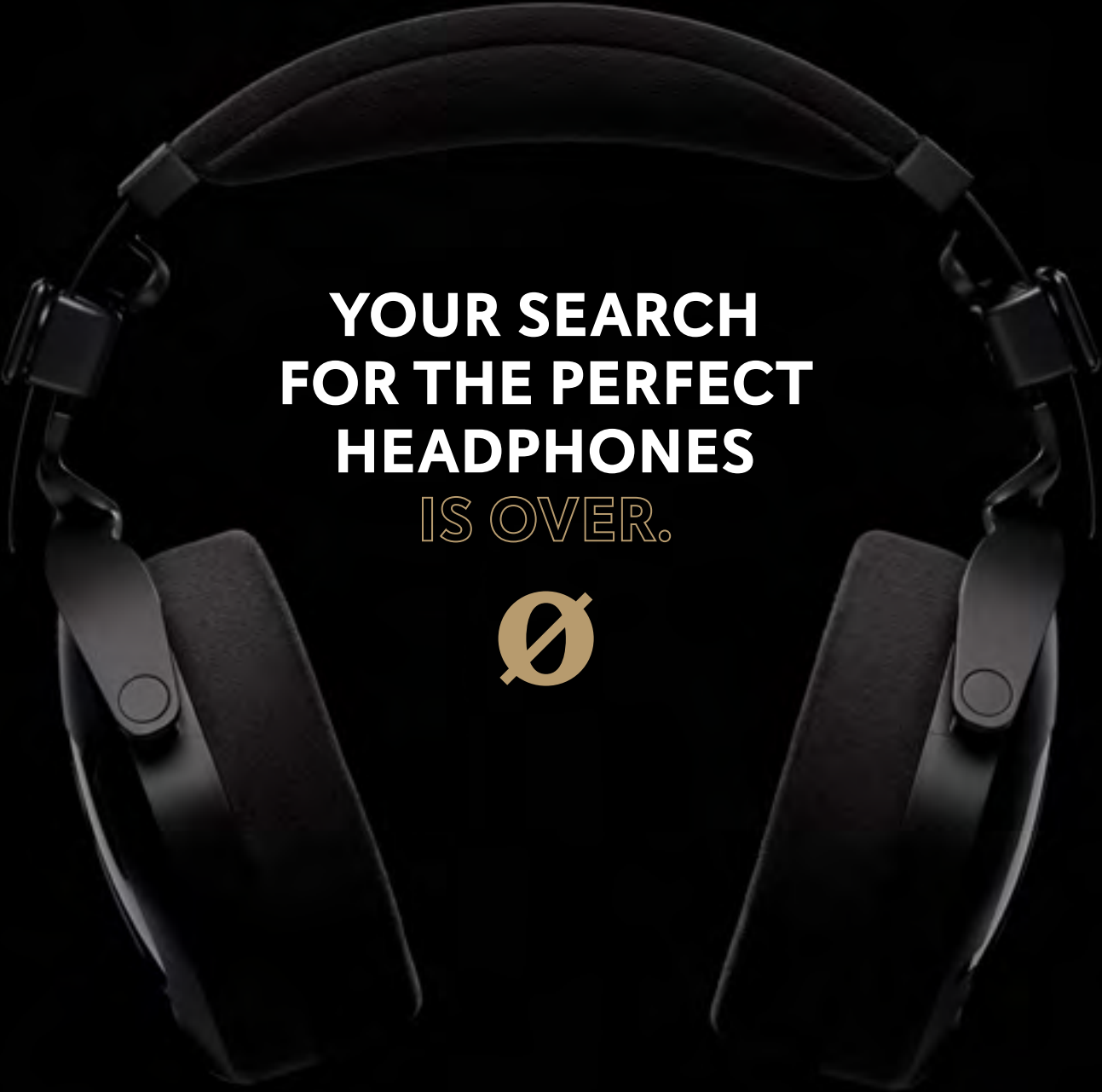
”



NTH-100

PROFESSIONAL OVER-EAR HEADPHONES





**YOUR SEARCH
FOR THE PERFECT
HEADPHONES
IS OVER.**

