

705-FL0000-00

合格证
QC PASS

深圳市神牛摄影器材有限公司

地址: 深圳市宝安区福海街道塘尾社区耀川工业区厂房2栋
电话: 0755-29609320(8062) 传真: 0755-25723423 邮箱: godox@godox.com

GODOX Photo Equipment Co., Ltd.

Add: Building 2, Yaochuan Industrial Zone, Tangwei Community, Fuhai Street, Bao'an District,
Shenzhen, China Tel: +86-755-29609320(8062) Fax: +86-755-25723423
E-mail: godox@godox.com

godox.com

Made in China



fotichaestli.ch

Godox

FL柔性LED灯
Flexible LED Light

FL150R FL150S FL100 FL60



说明手册

INSTRUCTION MANUAL

十、产品参数

柔性LED灯	FL150S	FL150R	FL100	FL60
供电DC电源供电	AC100V-240V(50/60HZ)			
	3.5A(DC16.8V 10A)		3A(DC16.8 7A)	2.5A(DC16.8 4.2A)
锂电池供电	V口电池			
功率	150W		100W	60W
色温	3300±200K~5600±200K			
100%光照度(LUX)	<4300 Lux		<3300 Lux	<1800 Lux
暗室,1m距离				
TLCI	≥98			
CRI	>96			
调光范围	10%-100%			
工作环境温度	-10°C~45°C			
频道	16个			
组别	6组(A、B、C、D、E、F)			
无线遥控距离	<30米			
蓝牙距离	<50米			
产品尺寸	60*60cm	30*120cm	40*60cm	30*45cm
套装重量	3.9kg	4.37kg	3.47kg	2.87kg

*设计和规格如有变更，恕不另行通知。

Foreword

Thank you for purchasing this Godox Product!

FL series Flexible LED Light are suitable for almost all shooting occasions with great portability and easy operation. They are extremely thin and portable like fabric, which can be folded to different shapes. Four models for choice: FL60(30x45cm), FL100(40x60cm), FL150S(60x60cm), FL150R(30x120cm).

Features:

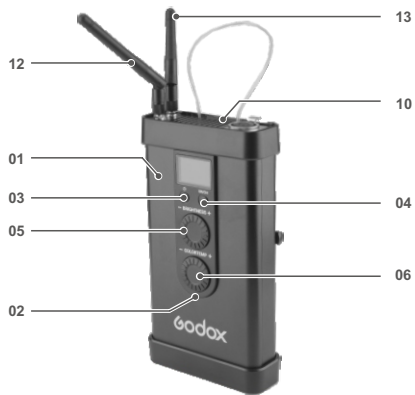
- Soft and even light effects & adjustable light brightness and color temperature.
- Compact and portable body with strong power. Suitable for lighting in small and narrow room.
- Can be folded to different shapes and used together to achieve creative light effects.
- Achieving wireless control by 433MHz grouping system(6 groups & 16 channels) and smartphone APP through Bluetooth.
- Powered by Lithium battery or DC power supply.
- With easy operation, great portability and compatibility.

⚠ Warning

- ⚠ Always keep this product dry. Do not use in rain or in damp conditions.
- ⚠ Do not disassemble. Should repairs become necessary, this product must be sent to an authorized maintenance center.
- ⚠ Keep out of reach of children.
- ⚠ As this product do not have waterproof function, please take measures of waterproof in rainy or damp environment.
- ⚠ Do not use the flash unit in the presence of flammable gases, chemicals and other similar materials. In certain circumstance, these materials may be sensitive to the strong light emitting from this flash unit and fire or electromagnetic interference may result.
- ⚠ As this product has built-in lithium battery, do not disassemble, impact, squeeze or put it into fire. If serious bulge occurs, please do not use. Do not use or store the product if the ambient temperature reads over 50°C. Please charge the product with specialized charger and correctly operate it within the defined voltage and working temperate according to the instruction manual.

Body

- 01. Main Body
- 02. Control Panel
- 03. Power Switch
- 04. Group/Channel Button
- 05. Select Dial
for Light Brightness
- 06. Select Dial
for Color Temperature
- 07. Battery Compartment
- 08. Power Input
- 09. Output Control Port
- 10. Thermovent 1
- 11. Thermovent 2
- 12. 433MHz Antenna
- 13. Bluetooth Antenna



Included Items

- 1. Flexible LED light
- 2. Controller
- 3. Power cord
- 4. Adapter
- 5. Foldable bracket
- 6. Holder
- 7. Battery buckle
- 8. Portable bag



Separately Sold Accessories

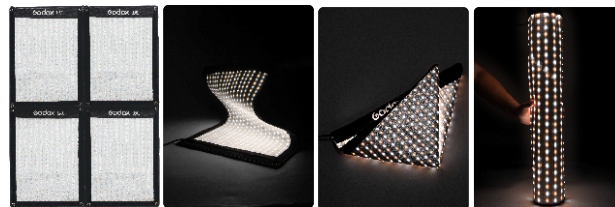
Choose appropriate soft box according to different flexible LED light models.

Model: FL-SF3045, FL-SF4060,
FL-SF6060, FL-SF30120

RC-A5 Remote control



Using Method



Use in combination

Shaping in different form

Installation

1. Unfold the flexible LED light and stretch the foldable bracket. Then, install the bracket onto the LED light's back.



2. Use a connect holder to install the foldable bracket and flexible LED light on the light stand.



3. Insert the connector of flexible LED light into the Output Control Port (on the top) of the controller while insert the connector of adapter into the Power Input (on the bottom).



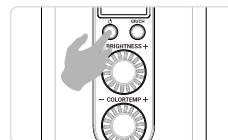
4. Connect the power source with power cord.



Operation

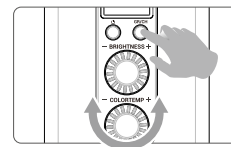
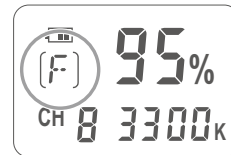
1. Power on/off:

long press the Power Switch to power the LED light on or off.



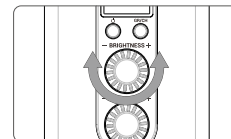
2. Choose group/channel:

press GR/CH button for once, and turn the Select Dial for Light Brightness or Color Temperature to change the channel value. Then, press GR/CH button again, and turn the Select Dial for Light Brightness or Color Temperature to change the group value. Press GR/CH button to exit.



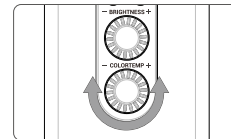
3. Light brightness adjustment:

turn the select dial for light brightness to change the value from 10% to 100%.



4. Color temperature adjustment:

turn the select dial for color temperature to change the value from 3300K to 5600K.



Wireless Control (433MHz wireless & smartphone APP through Bluetooth)

1. With 433 MHz wireless system, this product has remote grouping and control function. Up to 6 groups of flexible LED light can be controlled. 16 channels are available with strong anti-interference capability.
Please set the channels and groups of flexible LED light to the same as those of RC-A5 remote control before usage.

Adjusting Channel/Group of the Controller

- Press the GR/CH button and the channel icon blinks. Turn the select dial for light brightness or color temperature to choose a group ID (A to F).
- Press the GR/CH button twice and the group icon blinks. Turn the select dial for light brightness or color temperature to choose a channel ID (1 to 16).

Adjusting Channel/Group of the Remote Control

- Press the CH/GRP button and the group icon blinks. Press the "-" or "+" button to choose a group ID (A to F).
- Press the CH/GRP button twice and the channel icon blinks. Press the "-" or "+" button to choose a channel ID (1 to 16).

Adjusting Light Brightness/Color Temperature with the Remote Control

- Press the "-" or "+" button to adjust the light brightness.
- Press the SET button of the remote control once and the color temperature icon blinks. Press the "-" or "+" button to adjust the color temperature.

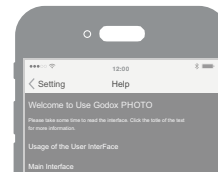
Note: The wireless signal can be received only when the controller is power on.

2. Godox FL series flexible LED light can also be controlled by smartphone APP through Bluetooth with 6 groups and 16 channel.

- Bluetooth connection: power the LED light on and long press the GR/CH button until a Bluetooth ID is displayed on the controller. Then, open the "GodoxPhoto" APP, click the Bluetooth and choose the corresponding Bluetooth ID of the controller. Finally, enter the password (the initial password is "000000"), and the Bluetooth is successfully connected.



- LED control: please find more details in the "GodoxPhoto" APP of smartphone: setting---help---LED.



Technique Data

Flexible LED Light	FL150S	FL150R	FI100	FI60
Power Supply	AC100V-240V(50/60HZ)			
DC Power Supply	3.5A(DC16.8V 10A)	3A(DC16.8 7A)	2.5A(DC16.8 4.2A)	
Lithium Battery	V-port battery			
Power	150W	100W	60W	
Color Temperature	3300±200K~5600±200K			
100% Light Brightness (LUX)(darkroom, 1m)	< 4300 Lux	< 3300 Lux	< 1800 Lux	
TLCI	≥ 98			
CRI	> 96			
Light Brightness Range	10%-100%			
Operation Temperature	-10°C~45°C			
Channel	16			
Group	6 group (A, B, C, D, E, F)			
Wireless Remote Control Distance	<30m			
Bluetooth Distance	<50m			
BT Frequency Range	2402.0-2480.0MHz			
Max. Transmitting Power	5dbm			
Dimension	60*60cm	30*120cm	40*60cm	30*45cm
Net Weight (only the main light body)	3.9Kg	4.37Kg	3.47Kg	2.87Kg

FCC Statement

This device complies with part 15 of the FCC Rules. Operation is subject to the following two conditions: (1) This device may not cause harmful interference, and (2) this device must accept any interference received, including interference that may cause undesired operation.

Any Changes or modifications not expressly approved by the party responsible for compliance could void the user's authority to operate the equipment.

Note: This equipment has been tested and found to comply with the limits for a Class B digital device, pursuant to part 15 of the FCC Rules. These limits are designed to provide reasonable protection against harmful interference in a residential installation. This equipment generates uses and can radiate radio frequency energy and, if not installed and used in accordance with the instructions, may cause harmful interference to radio communications. However, there is no guarantee that interference will not occur in a particular installation. If this equipment does cause harmful interference to radio or television reception, which can be determined by turning the equipment off and on, the user is encouraged to try to correct the interference by one or more of the following measures:

- Reorient or relocate the receiving antenna.
- Increase the separation between the equipment and receiver.
- Connect the equipment into an outlet on a circuit different from that to which the receiver is connected.
- Consult the dealer or an experienced radio/TV technician for help.

The device has been evaluated to meet general RF exposure requirement. The device can be used in portable exposure condition without restriction.

Warranty

Dear customers, as this warranty card is an important certificate to apply for our maintenance service, please fill in the following form in coordination with the seller and safekeep it. Thank you!

Product Information	Model	Product Code Number
Customer Information	Name	Contact Number
	Address	
Seller Information	Name	
	Contact Number	
	Address	
	Date of Sale	
Note:		

Note: This form shall be sealed by the seller.

Warranty Period

The warranty period of products and accessories is implemented according to the relevant Product Maintenance Information. The warranty period is calculated from the day (purchase date) when the product is bought for the first time. And the purchase date is considered as the date registered on the warranty card when buying the product.

How to Get the Maintenance Service

If maintenance service is needed, you can directly contact the product distributor or authorized service institutions. You can also contact the Godox after-sale service call and we will offer you service. When applying for maintenance service, you should provide valid warranty card. If you cannot provide valid warranty card, we may offer you maintenance service once confirmed that the product or accessory is involved in the maintenance scope, but that shall not be considered as our obligation.

Inapplicable Cases

The guarantee and service offered by this document are not applicable in the following cases: ①. The product or accessory has expired its warranty period; ②. Breakage or damage caused by inappropriate usage, maintenance or preservation, such as improper packing, improper usage, improper plugging in/out external equipment, falling off or squeezing by external force, contacting or exposing to the improper temperature, solvent, acid, base, flooding and damp environments, etc; ③. Breakage or damage caused by non-authorized institution or staff in the process of installation, maintenance, alternation, addition and detachment; ④. The original identifying information of product or accessory is modified, alternated, or removed; ⑤. No valid warranty card; ⑥. Breakage or damage caused by using illegally authorized, nonstandard or non-public released software; ⑦. Breakage or damage caused by force majeure or accident; ⑧. Breakage or damage that could not be attributed to the product itself. Once met these situations above, you should seek solutions from the related responsible parties and Godox assumes no responsibility. The damage caused by parts, accessories and software that beyond the warranty period or scope is not included in our maintenance scope. The normal discoloration, abrasion and consumption are not the breakage within the maintenance scope.

Maintenance and Service Support Information

The warranty period and service types of products are implemented according to the following Product Maintenance Information:

Product Type	Name	Maintenance Period(month)	Warranty Service Type
Parts	Circuit Board	12	Customer sends the product to designated site
	Battery	3	Customer sends the product to designated site
	Electrical parts e.g.battery charger, power cord, sync cable, etc.	12	Customer sends the product to designated site
Other Items	Flash tube, modeling lamp, lamp body, lamp cover, locking device, package, etc.	No	Without warranty

Godox After-sale Service Call **0755-29609320-8062**

Applicable Products

The document applies to the products listed on the Product Maintenance Information (see below for further information). Other products or accessories (e.g. promotional items, giveaways and additional accessories attached, etc.) are not included in this warranty scope.