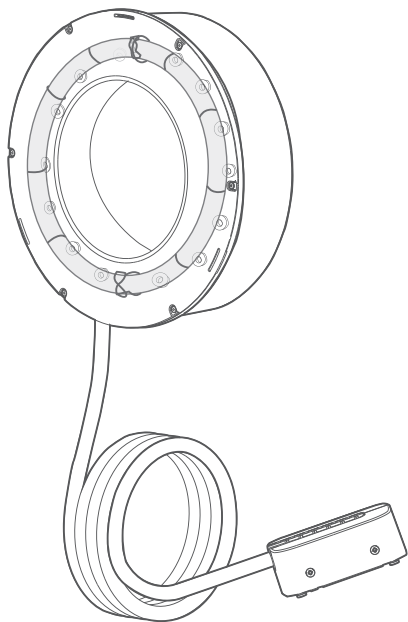


Godox

fotichaestli.ch



**R200**

环形灯头

Ring Flash Head

使用手册

Instruction Manual

## Foreword

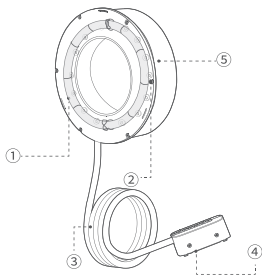
Thank you for purchasing!

Ring Flash Head R200 has a compact structure, 200Ws strong power and convenient installation method. It can be collocated with AD200/AD200Pro to create super even lighting source nearly without shadows, quite suitable for portrait shooting, macro shooting, medical shooting, dental shooting, etc.

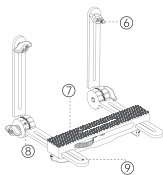
## Warning

- ⚠ Do not disassemble. Should repairs become necessary, this product must be sent to an authorized maintenance center.
- ⚠ Keep out of reach of children.
- ⚠ Stop using this product if it breaks open due to extrusion, falling or strong hit. Otherwise, electric shock may occur if you touch the electronic parts inside it.
- ⚠ Do not leave or store the flash unit if the ambient temperature reads over 50°C .
- ⚠ Do not fire the flash directly into the eyes (especially those of babies) within short distances. Otherwise visual impairment may occur.
- ⚠ Do not use the flash unit in the presence of flammable gases, chemicals and other similar materials. In certain circumstance, these materials may be sensitive to the strong light emitting from this flash unit and fire or electromagnetic interference may result.
- ⚠ In certain circumstance, please pay attention to the relevant warnings.
- ⚠ Always keep this product dry. Do not use in rain or in damp conditions.
- ⚠ Turn off the devices immediately in the event of malfunction.
- ⚠ R200 does not support HSS function.

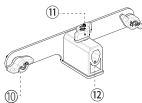
## Name of Parts



1. Flash Tube
2. LED Beads
3. Power Cable
4. Power Male Socket
5. Flash Body



6. Height Guide Rail
7. 1/4" Screw
8. Angle Adjusting Knob
9. Depth Guide Rail



10. Bracket Mount Knob
11. Bolt
12. Umbrella Hole

## Included Items of R200



Ring Flash Head R200\*1



Foldable Bracket FLB-01\*1



Umbrella Bracket UBB-01\*1



Carry Bag CB57\*1



Instruction Manual\*1

## Separately Sold Accessories



Honeycomb for Standard Reflector R200-RHC20/R200-RHC30/R200-RHC40



Honeycomb for Light Body R200-HC20/R200-HC30/R200-HC40



Reflector RFT-25S



Color Temperature Adjustment Set R200- CF



Carry Bag CB56

## Operation Instructions

### 1. Connecting to Pocket Flash AD200/AD200Pro

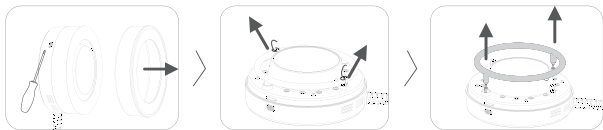
Insert the power male socket of R200 into the mount female socket of AD200/AD200Pro, push forward to connect.

### 2. Detaching R200

Press the locking button of AD200/AD200Pro and pull out the power male socket of R200.

### 3. Detaching the Flash Tube

Remove the upper shell of flash body by using a cross screwdriver, take out the tungsten wire that fixes the flash tube, then pull out the flash tube from the fixing sockets.



**⚠ Tip:** Make sure to power off before detaching the flash tube. Please wear gloves to take out the flash tube.

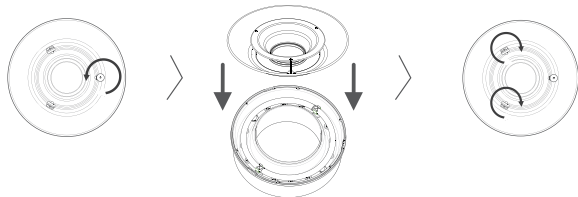
### 4. Installing the Flash Tube

Insert the flash tube feet into the sockets of AD200/AD200Pro.

**⚠ Note:** Please insert with the correct direction, the end with red mark is positive anode. The flash tube can't be installed when the bulgy end is aimed at the U- spring

### 5. Installing the Reflector (Included Items of R200 Kit)

Rotate counterclockwise to screw off the fixing knob of the reflector, mount the reflector to Ring Flash Head R200, and then rotate clockwise to tighten the fixing knob.




## 6. Installing the Camera (sold separately)

6.1 Aim the Height Guide Rail of Foldable Bracket FLB-01 at the screw holes on the back of Ring Flash Head R200, install the fixing ring, then rotate clockwise to tighten the Bracket Mount Knob.



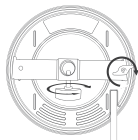
6.2 Aim the screw hole of the camera at the 1/4" screw of Foldable Bracket FLB-01, then rotate clockwise to tighten.



 Tip: The distance between the camera lens and the flash can be adjusted by rotating the knob on the bottom.

## 7. Installing the Umbrella (sold separately)

7.1 Aim the Umbrella Bracket UBB-01 at the screw holes on the back of the flash, insert into the Bracket Mount Knob and rotate clockwise to tighten.



7.2 Insert the umbrella and rotate clockwise to tighten.

## Technical Data

Model	R200
Flash Power	200Ws
Flash CCT	5800±200K
Modeling Lamp Power	10W
100% Brightness (Lux,in 0.5 meters)(≈)	1300
Modeling Lamp CCT	4500±300K
Modeling Lamp Level	Low/Medium/High
Dimension (excluding power cable)	188*188*60mm
Net Weight	0.64kg

\* Changes made to the specifications or designs may not be reflected in this manual.

## Maintenance

Shut down the device immediately should abnormal operation be detected.

Avoid sudden impacts and the product should be dedusted regularly.

It is normal for the light beads to be warm when in use.

Avoid continuous flashes if unnecessary.

Maintenance of the light must be performed by our authorized maintenance department which can provide original accessories.

This product, except consumables, is supported with a one-year warranty.

Unauthorized service will void the warranty.

If the product had failures or was wetted, do not use it until it is repaired by professionals.

Changes made to the specifications or designs may not be reflected in this manual.

## Declaration of Conformity

GODOX Photo Equipment Co,Ltd. hereby declares that the This equipment are in compliance with the essential requirements and other relevant provisions of EU Directive 2014/35/EU、 2014/30/EU. They are allowed to be used in all EU member states.

For more information of DoC, Please click this web link:[http://www.godox.com/DOC/Godox\\_R200\\_DOC.pdf](http://www.godox.com/DOC/Godox_R200_DOC.pdf).

## FCC Statement

This device complies with part 15 of the FCC Rules. Operation is subject to the following two conditions:

- (1) This device may not cause harmful interference, and
- (2) this device must accept any interference received, including interference that may cause undesired operation

Any Changes or modifications not expressly approved by the party responsible for compliance could void the user's authority to operate the equipment

**Note:** This equipment has been tested and found to comply with the limits for a Class B digital device, pursuant to part 15 of the FCC Rules. These limits are designed to provide reasonable protection against harmful interference in a residential installation. This equipment generates uses and can radiate radio frequency energy and, if not installed and used in accordance with the instructions, may cause harmful interference to radio communications. However, there is no guarantee that interference will not occur in a particular installation. If this equipment does cause harmful interference to radio or television reception, which can be determined by turning the equipment off and on, the user is encouraged to try to correct the interference by one or more of the following measures:

- Reorient or relocate the receiving antenna.
- Increase the separation between the equipment and receiver.
- Connect the equipment into an outlet on a circuit different from that to which the receiver is connected.
- Consult the dealer or an experienced radio/TV technician for help



## Warranty

Dear customers, as this warranty card is an important certificate to apply for our maintenance service, please fill in the following form in coordination with the seller and safe-keep it. Thank you!

Product Information	Model	Product Code Number
Customer Information	Name	Contact Number
	Address	
Seller Information	Name	
	Contact Number	
	Address	
	Date of Sale	
Note		

Note: This form shall be sealed by the seller.

### Applicable Products

The document applies to the products listed on the Product Maintenance Information (see below for further information). Other products or accessories (e.g. promotional items, giveaways and additional accessories attached, etc.) are not included in this warranty scope.

### Warranty Period

The warranty period of products and accessories is implemented according to the relevant Product Maintenance Information. The warranty period is calculated from the day(purchase date) when the product is bought for the first time, And the purchase date is considered as the date registered onthe warranty card when buying the product.

### How to Get the Maintenance Service

If maintenance service is needed, you can directly contact the product distributor or authorized service institutions. You can also contact the Godox after-sale service call and we will offer you service. When applying for maintenance service, you should provide valid warranty card. If you cannot provide valid warranty card, we may offer you maintenance service once confirmed that the product or accessory is involved in the maintenance scope, but that shall not be considered as our obligation.

## Inapplicable Cases

The guarantee and service offered by this document are not applicable in the following cases: ① . The product or accessory has expired its warranty period; ② .Breakage or damage caused by inappropriate usage, maintenance or preservation, such as improper packing, improper usage, improper plugging in/out external equipment, falling off or squeezing by external force, contacting or exposing to the improper temperature, solvent, acid, base, flooding and damp environments, etc; ③ . Breakage or damage caused by non-authorized institution or staff in the process of installation, maintenance, alternation, addition and detachment; ④ . The original identifying information of product or accessory is modified, alternated, or removed; ⑤ . No valid warranty card; ⑥ . Breakage or damage caused by using illegally authorized, nonstandard or non-public released software; ⑦ . Breakage or damage caused by force majeure or accident; ⑧ . Breakage or damage that could not be attributed to the product itself. Once met these situations above, you should seek solutions from the related responsible parties and Godox assumes no responsibility. The damage caused by parts, accessories and software that beyond the warranty period or scope is not included in our maintenance scope. The normal discoloration, abrasion and consumption are not the breakage within the maintenance scope.

## Maintenance and Service Support Information

The warranty period and service types of products are implemented according to the following Product Maintenance Information:

Product Type	Name	Maintenance Period(month)	Warranty Service Type
Parts	Circuit Board	12	Customer sends the product to designated site
	Battery	3	Customer sends the product to designated site
	Electrical parts e.g.battery charger, power cord, sync cable, etc.	12	Customer sends the product to designated site
Other Items	Flash tube, modeling lamp, lamp body, lamp cover, lockingdevice, package, etc.	No	Without warranty



Wechat  
Official Account

神牛微信公众号

### 深圳市神牛摄影器材有限公司

地址: 深圳市宝安区福海街道塘尾社区耀川工业区厂房2栋 电话: 0755-29609320(8062)

传真: 0755-25723423 邮箱: godox@godox.com

### GODOX Photo Equipment Co., Ltd.

Add.: Building 2, Yaochuan Industrial Zone, Tangwei Community, Fuhai Street, Bao' an District, Shenzhen 518103, China Tel: +86-755-29609320(8062) Fax: +86-755-25723423 E-mail: godox@godox.com

[www.godox.com](http://www.godox.com)

Made in China | 705-R20000-02

